

100% Renewable energy in developing countries

Focus on Tanzania, Morocco and the Cooking Sector



TODAY'S PANELISTS



Irene Garcia

Policy Officer

World Future Council

www.worldfuturecouncil.org



Sixbert Mwanga

Coordinator

CAN Tanzania

www.climate network.org/profile/member/climate-action-network-tanzania



Toby Couture

Founder

E3 Analytics

www.e3analytics.eu



ENGAGE AND JOIN THE MOVEMENT



www.go100re.net



@GO100RE #Go100RE



www.facebook.com/global100re

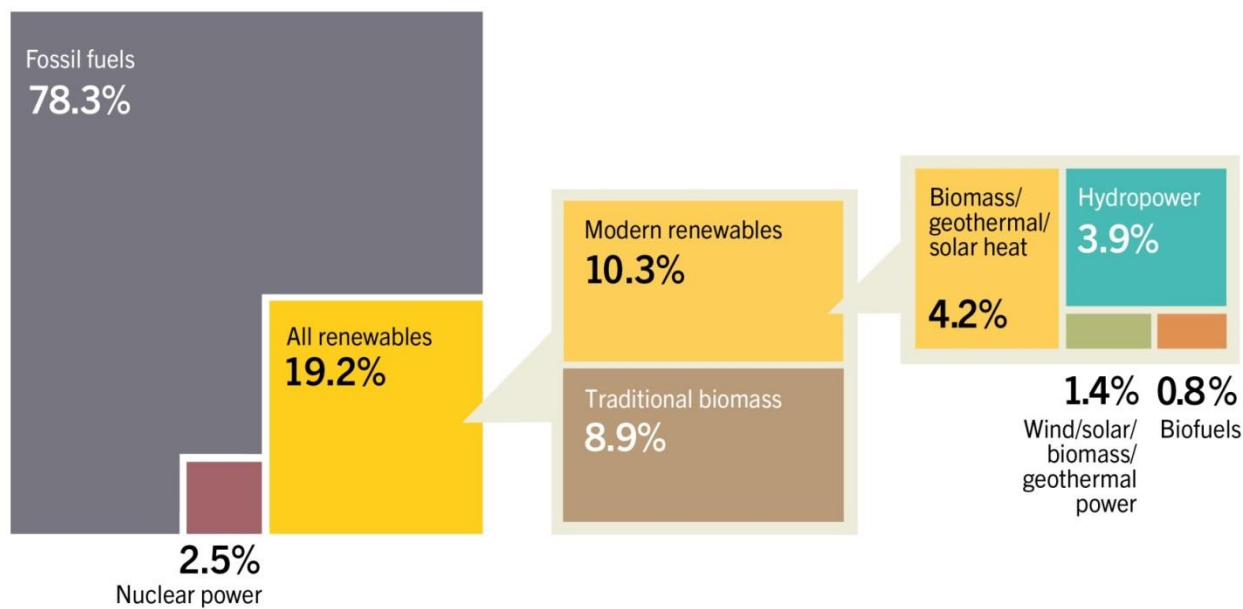


CLIMATE VULNERABLE FORUM

	Afghanistan		Guatemala		Papua New Guinea
	Bangladesh		Haiti		Philippines
	Barbados		Honduras		Rwanda
	Bhutan		Kenya		Saint Lucia
	Burkina Faso		Kiribati		Samoa
	Cambodia		Lebanon		Senegal
	Colombia		Madagascar		South Sudan
	Comoros		Malawi		Sri Lanka
	Costa Rica		Maldives		Sudan
	Democratic Republic of the Congo		Marshall Islands		Tanzania
	Dominican Republic		Mongolia		Timor-Leste
	Ethiopia		Morocco		Tunisia
	Fiji		Nepal		Tuvalu
	The Gambia		Niger		Vanuatu
	Ghana		Palau		Viet Nam
	Grenada		Palestine		Yemen



Estimated Renewable Energy Share of Global Final Energy Consumption, 2014



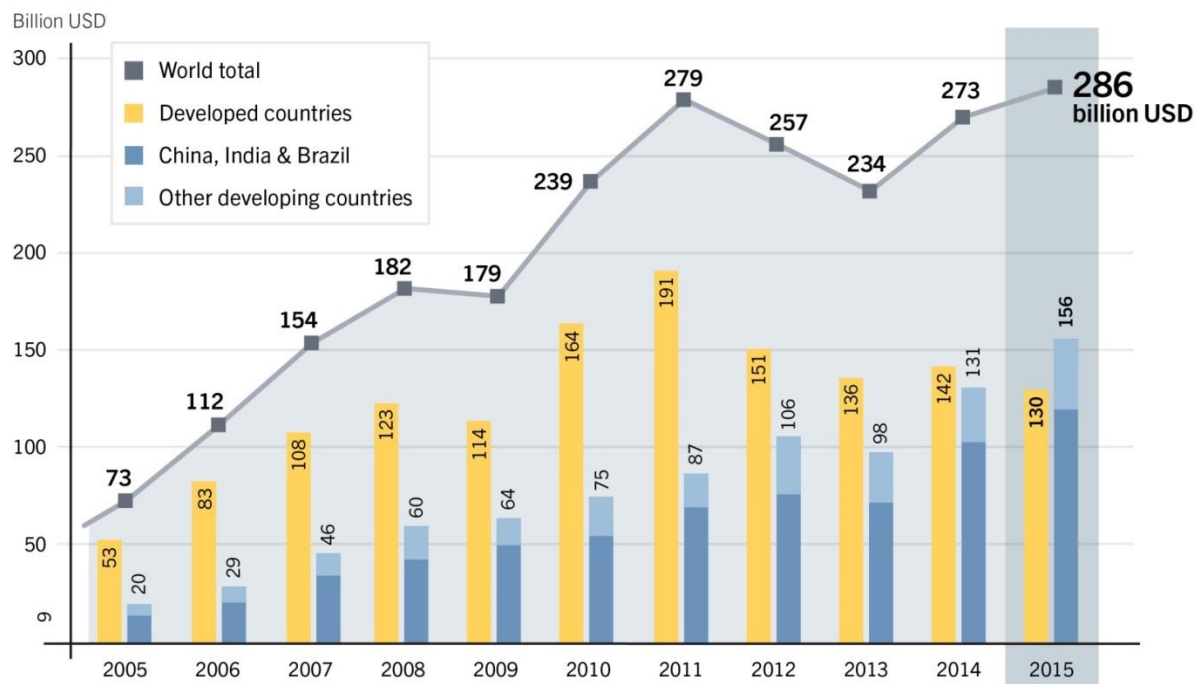
REN21 *Renewables 2016 Global Status Report*



100%
RENEWABLES



Global New Investment in Renewable Power and Fuels, Developed, Emerging and Developing Countries, 2005–2015



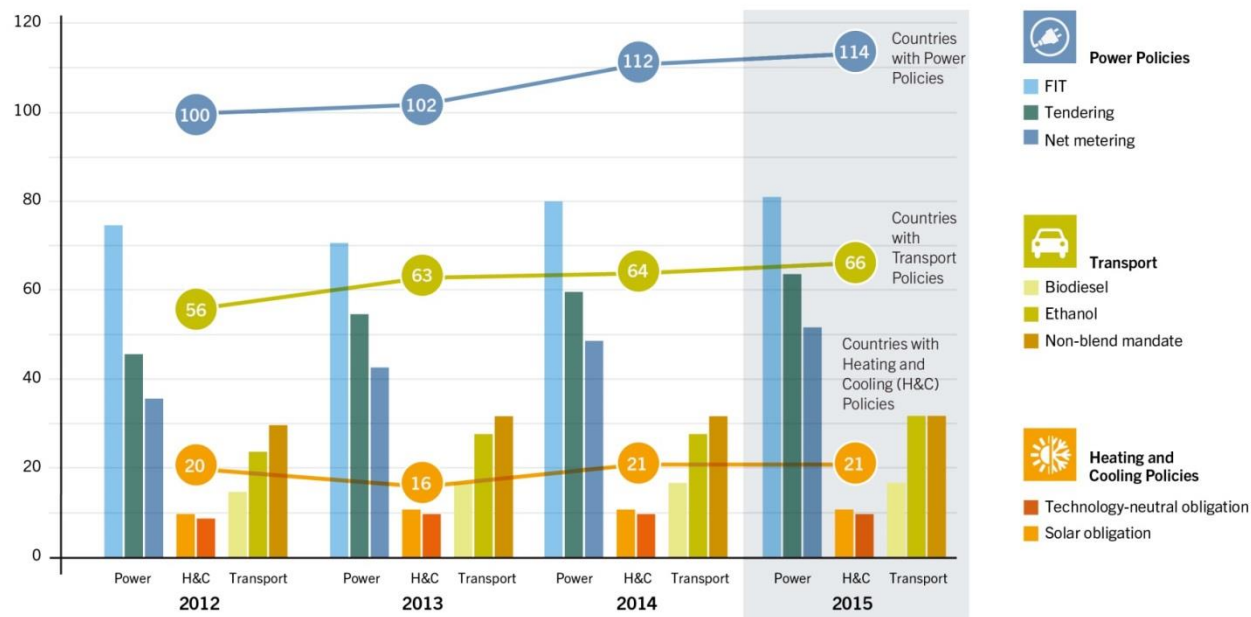
REN21 *Renewables 2016 Global Status Report*



**100%
RENEWABLES**



Number of Renewable Energy Policies and Number of Countries with Policies, by Type, 2012–15



Note: Figure does not show all policy types in use. Countries are considered to have policies when at least one national or state/provincial-level policy is in place. Some transport policies include both biodiesel and ethanol; in this case, the policy is counted once in each category (biodiesel and ethanol).

REN21 *Renewables 2016 Global Status Report*



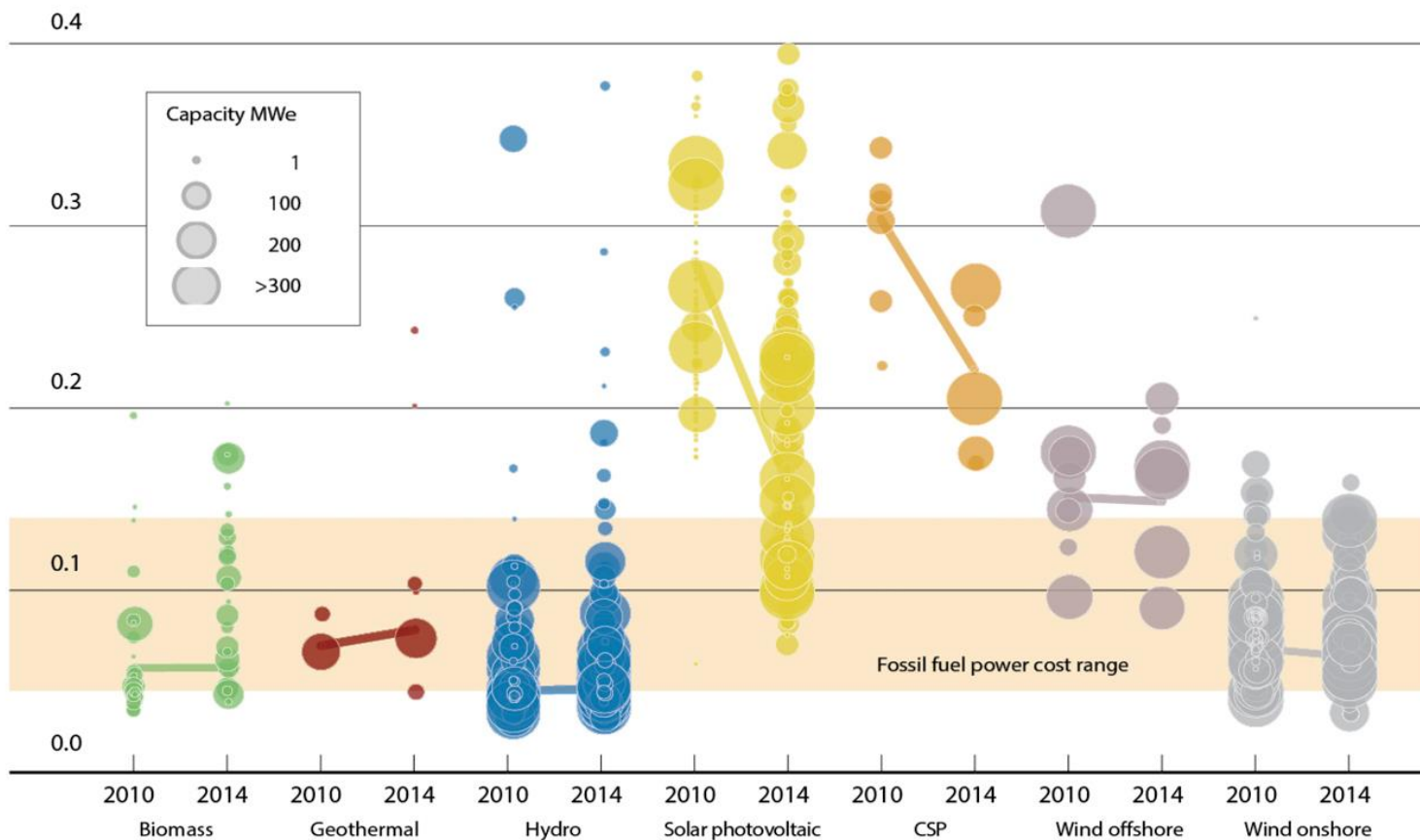
Source: REN21 Policy Database

**100%
RENEWABLES**



FIGURE 2.1: THE LEVELISED COST OF ELECTRICITY FROM UTILITY-SCALE RENEWABLE TECHNOLOGIES, 2010 AND 2014

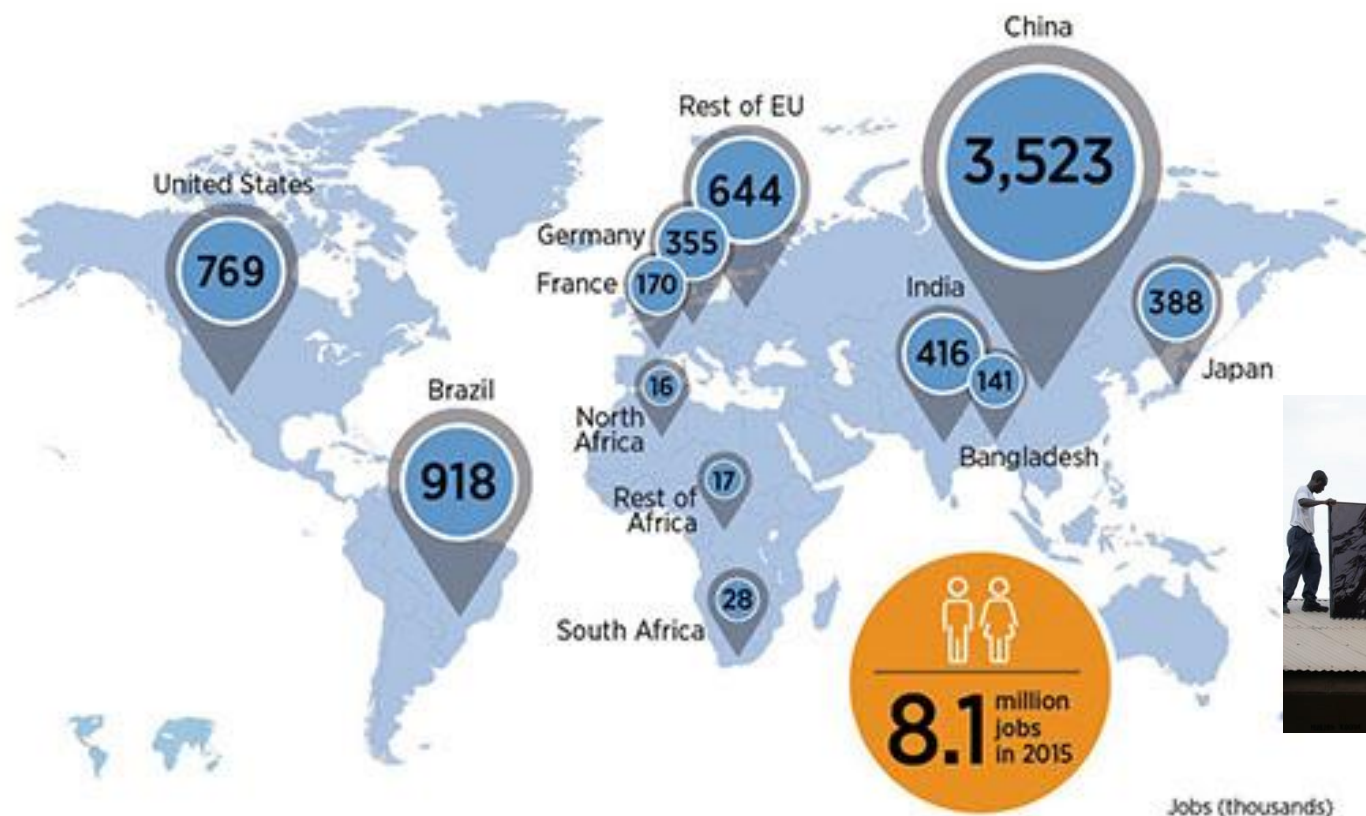
2014 USD/kWh



Source: IRENA Renewable Cost Database.

Note: Size of the diameter of the circle represents the size of the project. The centre of each circle is the value for the cost of each project on the Y axis. Real weighted average cost of capital is 7.5% in OECD countries and China; 10% in the rest of the world.

RENEWABLE ENERGY EMPLOYMENT IN SELECTED COUNTRIES AND REGIONS



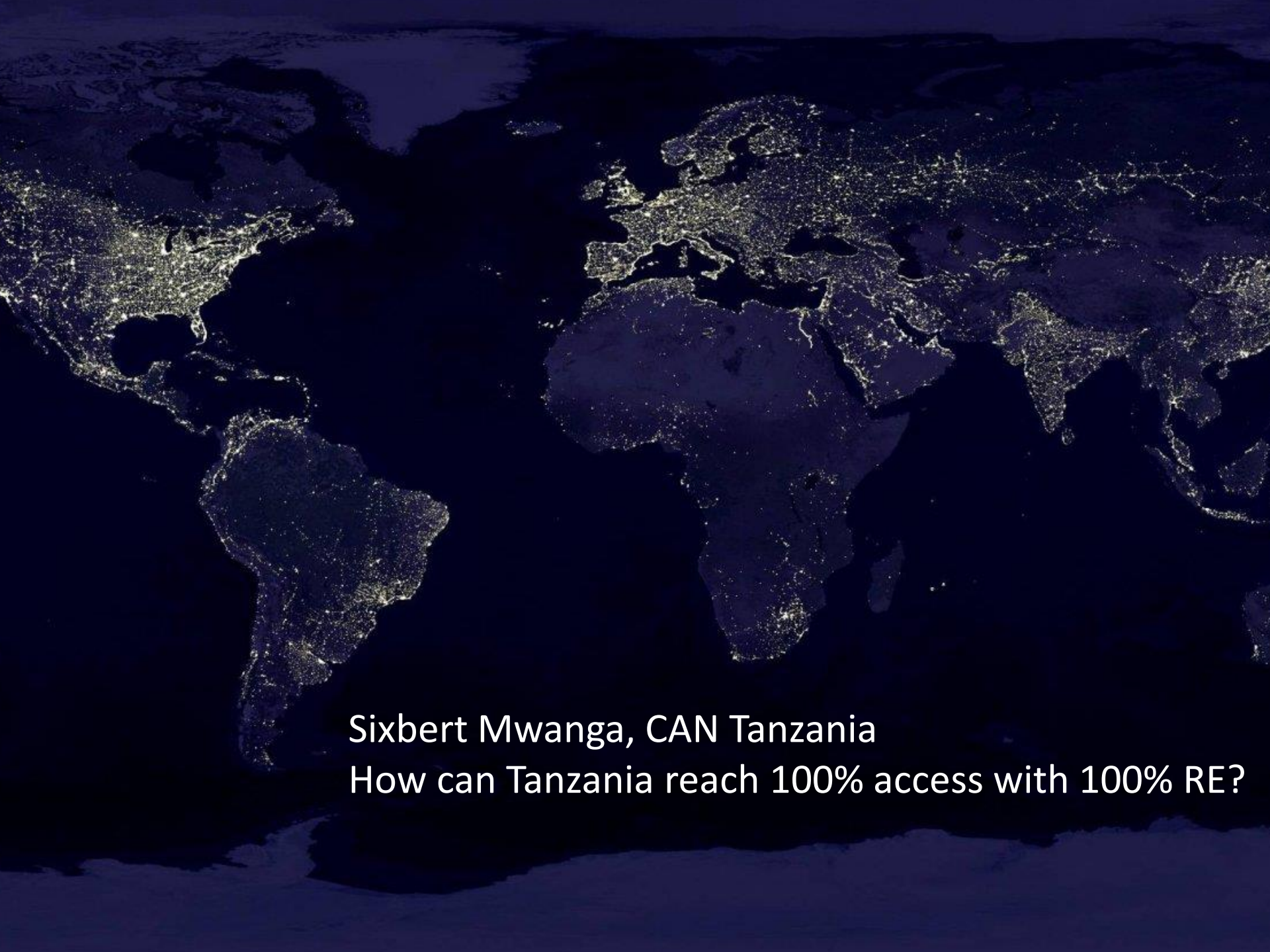
100% RE PIONEERS



Irene Garcia, World Future Council
How Morocco can boost development with 100% RE

Find her on twitter: @irenegarciag





Sixbert Mwanga, CAN Tanzania

How can Tanzania reach 100% access with 100% RE?



Toby Couture, E3Analytics
Beyond Fire: How can we cook with RE?
Find her on twitter: @TobyCouture